



## S.6 TECHNICAL DRAWING PAPER TWO

Fig 1 is a residential house not drawn to scale. The apron is 450mm wide and 150mm thick.

All openings are bridged with concrete lintels  
The beam is 225mm wide and 230mm high.

### SPECIFICATIONS:

- Roof: Timber framed roof pitched at 30° and covered with tiles  
Timber rafters 100mm x 50mm,  
Struts 100mm x 50mm,  
Purlins 100mm x 50mm,  
Battens 50mm x 50mm,  
Tie beams 150mm x 50mm,  
Wall plates 100mm x 75mm.  
Fascia boards and barge boards 225mm x 25mm.
- Walls: 3000mm high from the floor level to the underside of the wall plate.  
All walls are 230mm thick,  
Concrete window sills are 100mm thick.
- Doors: D1 is a double leaf casement door 1000mm wide and 2100mm high  
D2 = Two paneled wooden doors 900mm x 2100mm  
D3 is a steel door 2100mm X 2700mm
- Windows: W1 = 1200 x 1200 casement, W2= 600 wide x 600 casement
- Floor: Suspended timber ground floor with 25mm thick tongue and groove boards, 150 x 50 joists, 100 x 75 wall plates, 400mm high sleeper walls.
- Foundation: 690mm X 230mm concrete strip cast 900mm below the ground level.  
230mm thick plinth wall.
- (a) Draw the plan to a scale of 1:50  
(b) Draw section A – A to a scale of 1:50  
(c) Draw the front view to a scale of 1: 50  
(d) Draw a **free hand** pictorial sketch of the house with corner **P** in the foreground.

**END**

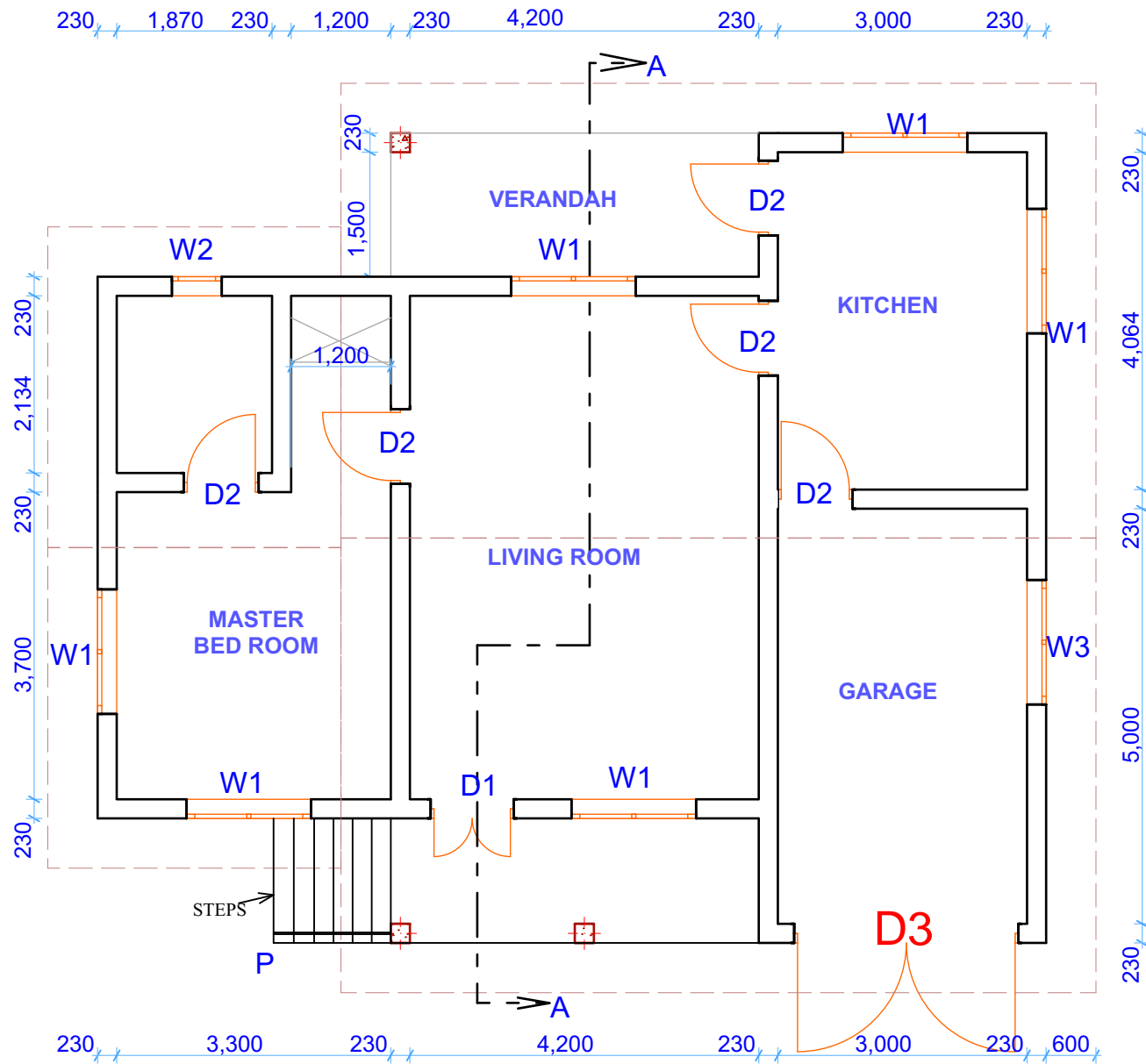


FIG. 1